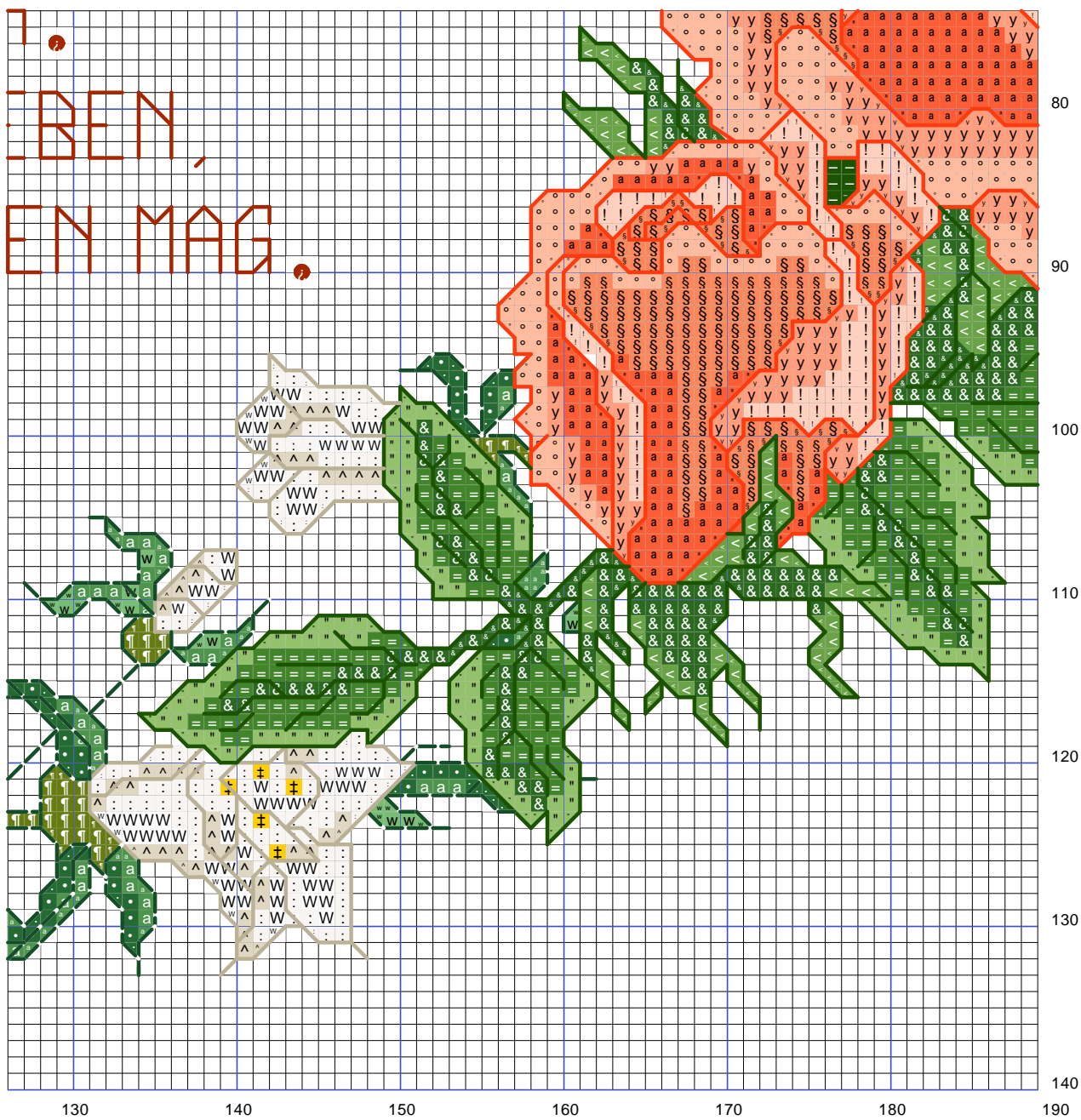
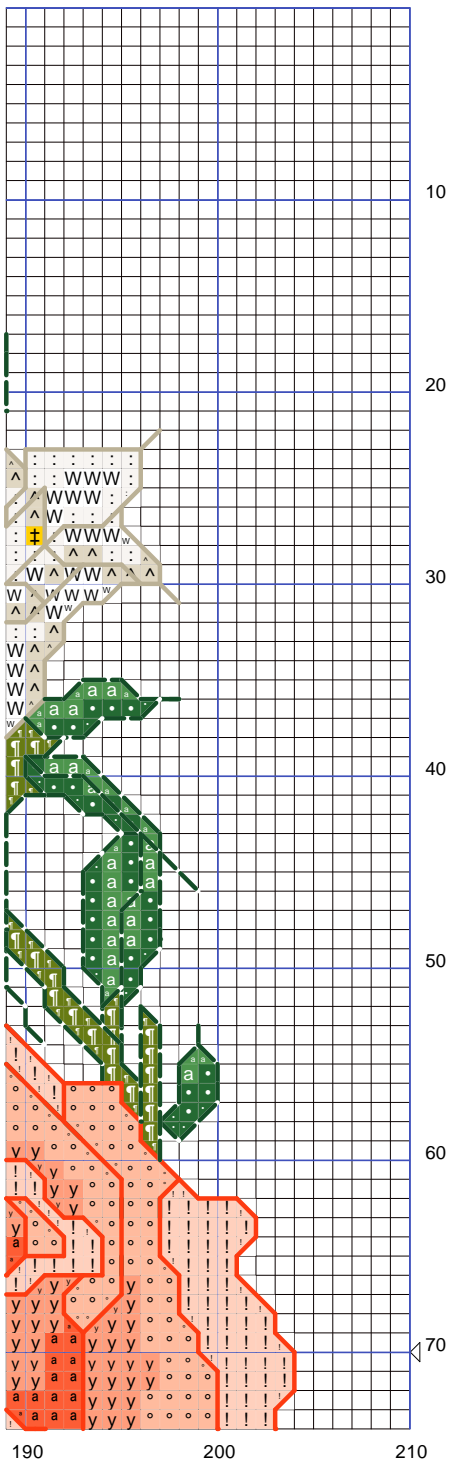


SO WIE DIE ROSEN BLÜH
SO BLÜHE STETS DEIN GL
UND WENN DU ROSEN SIE
DANN DENK AN MICH ZURI
ER ROSEN SOLL DEIN LEBE
ICH BIN ANGEKOMMEN DORF

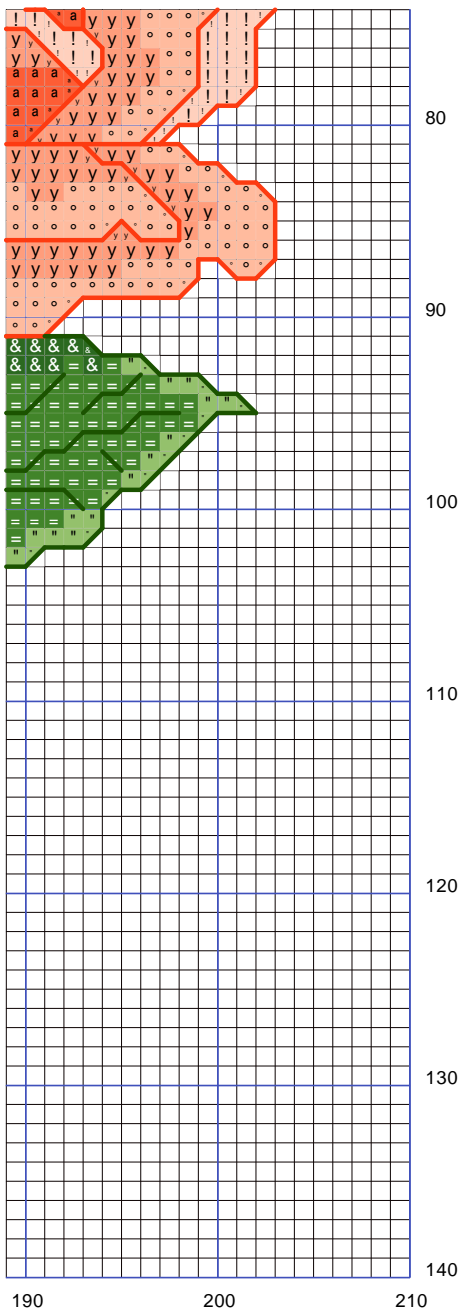








Author: Nicole Eisfeld
by NKS-Design



Author:	Nicole Eisfeld
Grid Size:	210W x 140H
Cloth Count:	14
Fabric:	
Design Area:	15," W x 10," H (201 x 129 stitches)

Legend: DMC Stranded Cotton (strands)

a	608 burnt orange (2)	"	989 forest green (2)
z	918 red copper - dk (2)	<	988 forest green - md (2)
y	3341 apricot (2)	-	895 hunter green - vy dk (2)
§	3340 apricot - md (2)	=	987 forest green - dk (2)
°	3824 apricot - lt (2)	&	986 forest green - vy dk (2)
!	967 apricot - vy lt (2)	w	320 pistachio green - md (2)
:	Ecru ecru (2)	a	367 pistachio green - dk (2)
^	644 beige gray - md (2)	•	319 pistachio green - vy dk (2)
±	444 lemon - dk (2)	W	White white (2)
↑	580 moss green - dk (2)		

Backstitches: DMC Stranded Cotton (strands)

	606 burnt orange-red (2)		895 hunter green - vy dk (2)
	918 red copper - dk (2)		986 forest green - vy dk (2)
	642 beige gray - dk (2)		890 pistachio green - ul dk (2)
	3046 yellow beige - md (2)		